

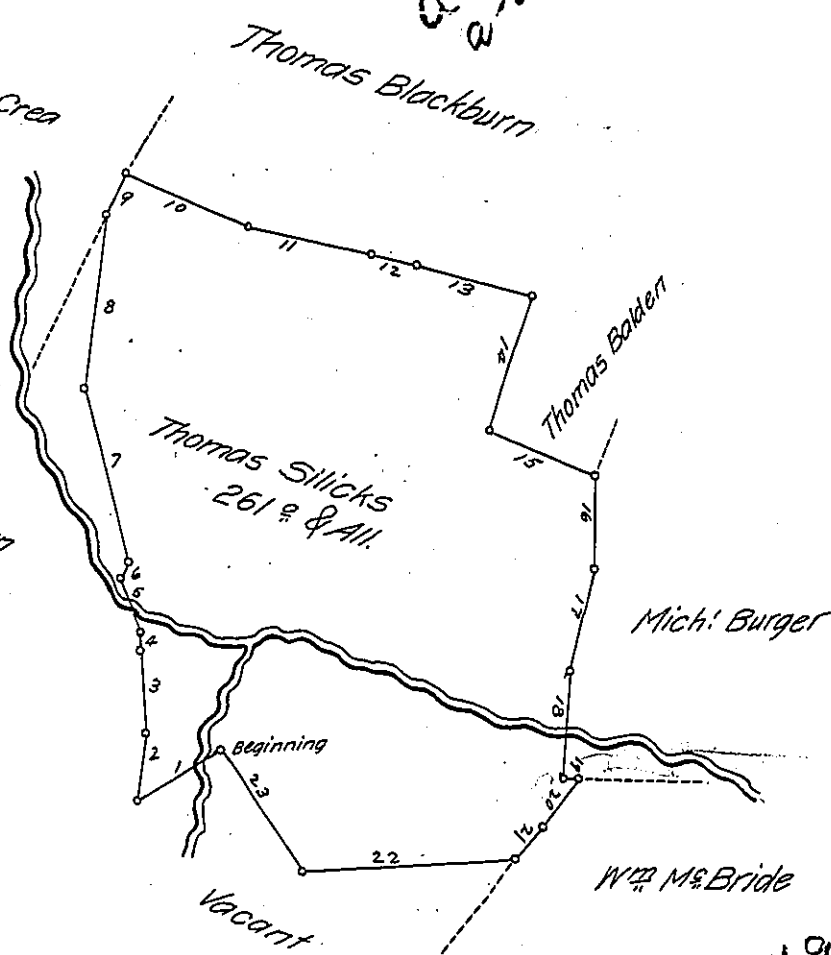
FORM No. 1.

Courses Beginning at a White Oak thence as follows

- Nº1 S 29° W 43.7 P<sup>s</sup> small W.O.
- Nº2 N 27° W 27.4 P<sup>s</sup> Chest. OX
- Nº3 N 38° W 35.3 P<sup>s</sup> Chest
- Nº4 N 19½° W 8.5 P<sup>s</sup> B.O.
- Nº5 N 52° W 25 P<sup>s</sup> W.O.
- Nº6 N 15½° W 5.8 P<sup>s</sup> W.O.
- Nº7 N 45° W 17.8 P<sup>s</sup> Stones
- Nº8 N 24° W 74.6 P<sup>s</sup> Stones
- Nº9 N 7° W 21.6 P<sup>s</sup> Chest
- Nº10 N 84° E 58.1 P<sup>s</sup> B.O.
- Nº11 N 72° E 55.4 P<sup>s</sup> Chest OX
- Nº12 N 78° E 19.2 P<sup>s</sup> W.O.
- Nº13 N 70¾° E 59.6 P<sup>s</sup> W.O.
- Nº14 S 13° E 59 P<sup>s</sup> W.O.
- Nº15 N 83° E 50 P<sup>s</sup> stones
- Nº16 S 30° E 40.6 P<sup>s</sup> Ash
- Nº17 S 19° E 4.2 P<sup>s</sup> Post
- Nº18 S 29° E 47.4 P<sup>s</sup> Post
- Nº19 N 64° E 2.5 P<sup>s</sup> W.O.
- Nº20 S 2¼° W 24.6 P<sup>s</sup> W.O.
- Nº21 S 11½° W 21 P<sup>s</sup> Post
- Nº22 S 58° W 92.2 P<sup>s</sup> Poplar
- Nº23 N 66° W 63.4 P To the Beginning

Samm<sup>l</sup> McCrean  
now  
Robt. McCrean

Laurence McQuinn



Situated in Manallen Township York County and Surveyed the 21<sup>st</sup> Day of of September 1786 In pursu-  
ance of a Warrant dated April 10<sup>th</sup> 1786.

By Moses McCrean D. S. S.

To John Lukens Esq. Surveyor General

IN TESTIMONY that the above is a copy of the original remaining on file in  
the Department of Internal Affairs of Pennsylvania, made  
conformably to an Act of Assembly approved the 16th day of  
February, 1833, I have hereunto set my Hand and caused  
the Seal of said Department to be affixed at Harrisburg,  
this twenty second day of November 1906

*Lucas D. Brown*  
Secretary of Internal Affairs.